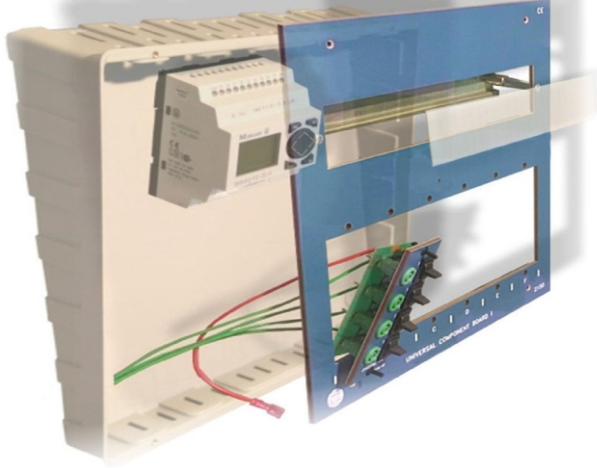
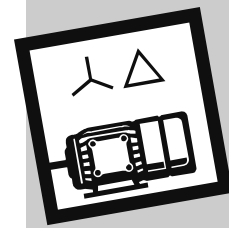


## Contactor Control

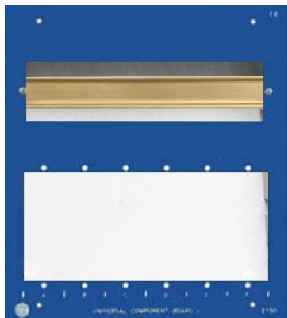


- **UNIVERSAL COMPONENT BOARD** for the built-in of industrial components on a top hat rail
- Industrial components and existing trainings systems are placed into operation via 4 mm safety jacks.
- huge variety of insert modules
- low cost implementation of own ideas
- Possibility of accomplishment of project works



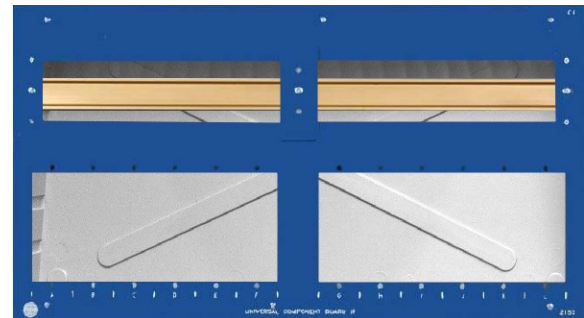
### UNIVERSAL COMPONENT BOARD

**Types**  
2150, -51, -52, -53



**UNIVERSAL COMPONENT BOARD (Type 2150)**

the top hat rail is mounted inside, up to 6/12 hps- insert modules could be assembled

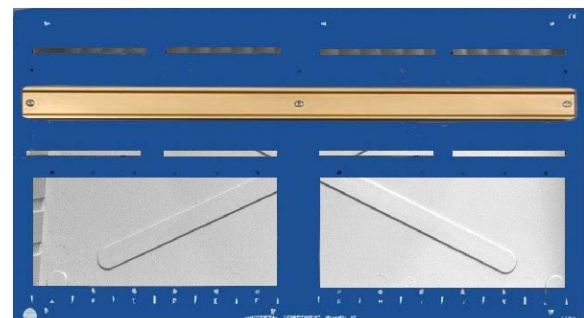


**UNIVERSAL COMPONENT BOARD (Type 2152)**

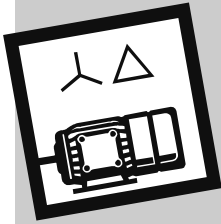


**UNIVERSAL COMPONENT BOARD (Type 2151)**

the top hat rail is mounted on the front, up to 6/12 hps- insert modules could be assembled



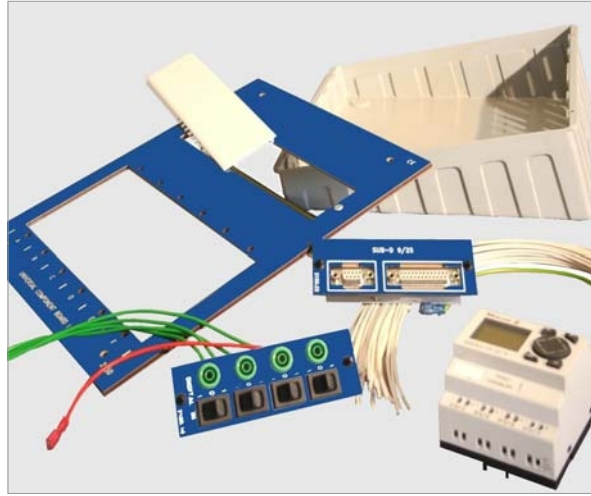
**UNIVERSAL COMPONENT BOARD (Type 2153)**



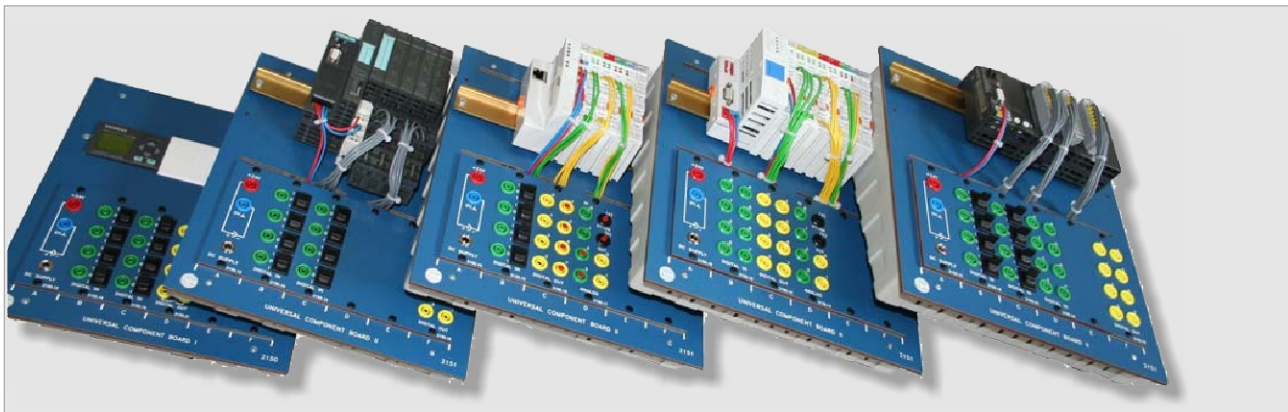
## UNIVERSAL COMPONENT BOARD

**Types**  
2150, -51, -52, -53

## Contactor Control



UNIVERSAL COMPONENT BOARD I (Type 2150)



Examples for UNIVERSAL COMPONENT BOARD with varying components and insert modules

### Mechanical Data

The top hat rail, that is mounted on the front, can be assembled with two varying heights. Therefore the industrial components could be mounted, which aren't eccentric placed on the top hat rail.

- **Material of the front panel:** Laminate (5 mm), matt blue
- **Rear front:** Grey plastic cover (angled)
- **Dimension:**

UNIVERSAL COMPONENT BOARD I (Type 2150):  
266 x 297 x 95 mm (w x h x d)

UNIVERSAL COMPONENT BOARD II (Type 2151):  
266 x 297 x 95 mm (w x h x d)

UNIVERSAL COMPONENT BOARD III (Type 2152):  
532 x 297 x 95 mm (w x h x d)

UNIVERSAL COMPONENT BOARD IV (Type 2153):  
532 x 297 x 95 mm (w x h x d)

#### • Weight:

UNIVERSAL COMPONENT BOARD I: approx. 1.5 kg

UNIVERSAL COMPONENT BOARD II: approx. 1.5 kg

UNIVERSAL COMPONENT BOARD III: approx. 2.0 kg

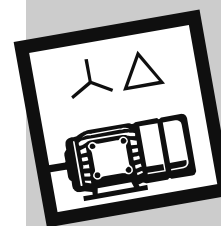
UNIVERSAL COMPONENT BOARD IV: approx. 2.0 kg

### Scope of delivery:

UNIVERSAL COMPONENT BOARD with mounted top hat rail and grey plastic cover. For the UNIVERSAL COMPONENT BOARDS (Type 2150 and 2152) covers are provided. With these covers the free space in the front of the board is closed after the assembly of the industrial components.

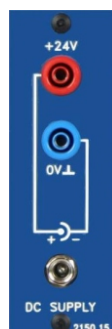
## Contactor Control

### Overview of the currently available insert modules, suitable for the UNIVERSAL COMPONENT BOARDS



### UNIVERSAL COMPONENT BOARD

### Insert Modules



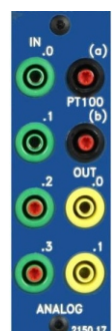
#### DC SUPPLY (Type 2150.15)

Insert module  
(one width)  
Connection of 24 V DC  
with 4 mm safety jacks or  
hollow plugs for the stabi-  
lised power supply unit  
(Type 3816) 24 V DC / 1 A



#### DIGITAL IN (Type 2150.16)

Insert module  
(one width)  
4 digital inputs via  
4 mm safety jacks and  
additional stimulation  
via 4 pushbutton/lock-in  
switches



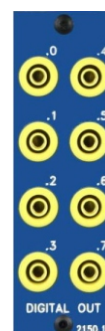
#### ANALOG (Type 2150.17)

Insert module  
(one width)  
4 analog inputs,  
2 analog outputs and  
1 PT100 input via 4 mm  
safety jacks



#### DIGITAL IN (Type 2150.18)

Insert module  
(one width)  
8 digital inputs via 4 mm  
safety jacks



#### DIGITAL OUT (Type 2150.19)

Insert module  
(one width)  
8 digital outputs via 4 mm  
safety jacks



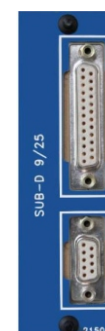
#### MAINS (Type 2150.20)

Insert module  
(one width)  
single-phase mains con-  
nection, with 2-pole  
mains switch, additional  
mains fuse and 3-core  
mains cable



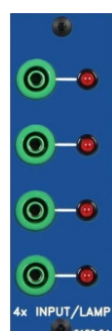
#### DIGITAL OUT (Type 2150.21)

Insert module  
(one width)  
4 potential-free NOCs  
via 4 mm safety jacks



#### MECHATRONIC ADAPTER (Type 2150.22)

Insert module  
(one width)  
9-pin and 25-pin SUB-D  
adapter to connect  
mechatronic systems to  
a PLC



#### INPUT/LAMP (Type 2150.24)

Insert module  
(one width)  
4 lamps, 24 V /  
4 connections via 4 mm  
safety jacks



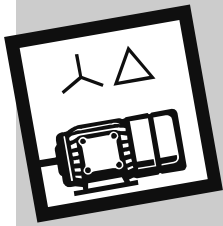
#### CABLE ADAPTER (Type 2150.25)

Insert module  
(one width)  
for connection of 8 usual  
installation lines



#### DIGITAL IN AC (Type 2150.27)

Insert module  
(one width)  
4 digital inputs via 4 mm  
safety jacks and addi-  
tional stimulation via 4  
pushbutton/lock-in swit-  
ches 230 V AC



## UNIVERSAL COMPONENT BOARD

### Insert Modules

---

## Contactor Control

---



#### MAINS (Type 2150.60)

Insert module  
(one width)

For 230 V AC mains  
connection via 4 mm sa-  
fety sockets, with phase  
pilot lamp



#### Blank panel (Type 2130.19)

Cover for one free ex-  
pansion square  
(one width)



#### Blank panel (Type 2130.25)

Cover for two free expansion squares  
(double width)

---

### Scope of delivery for the insert modules:

---

Completely assembled insert modules with dowels to be built in the UNIVERSAL COMPONENT BOARD. Strands for connection of the insert module to the industrial components are provided.

Subject to technical modifications.